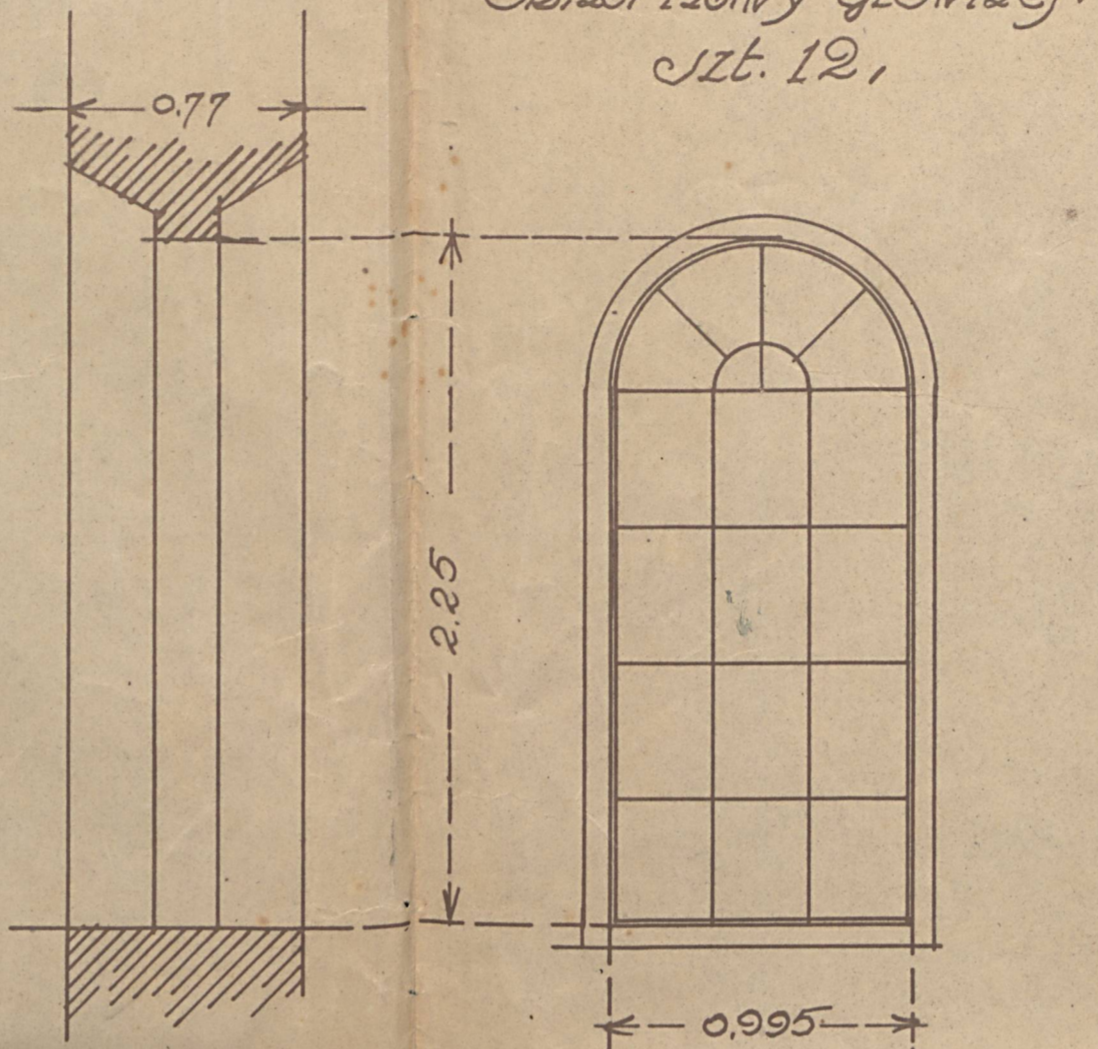
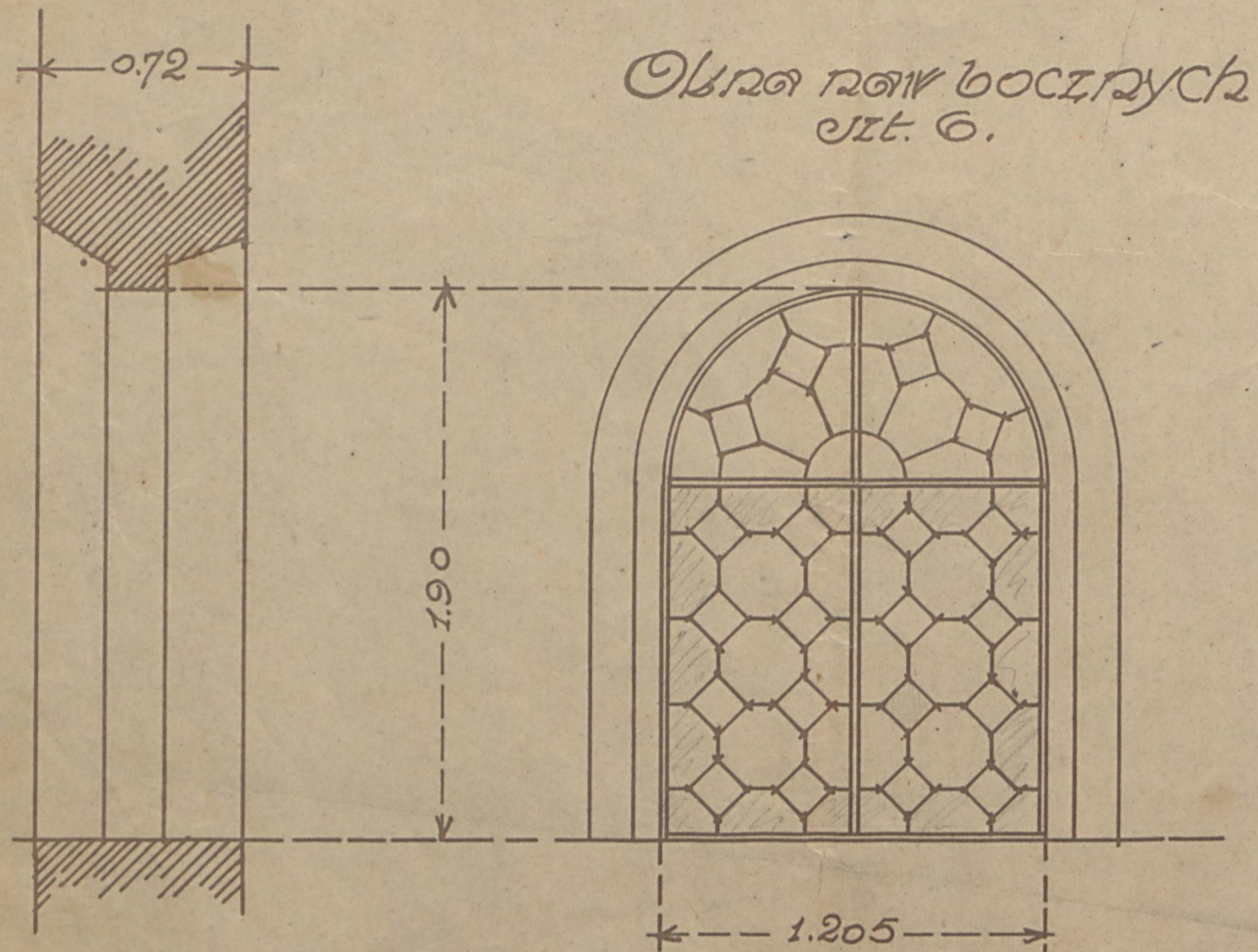
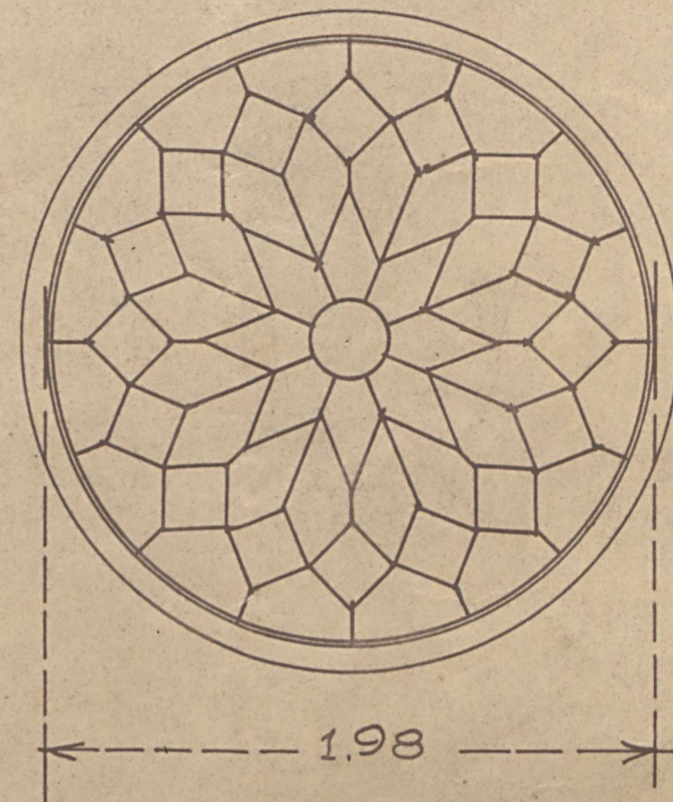


Kościół w Kłoci.

Wykres okien

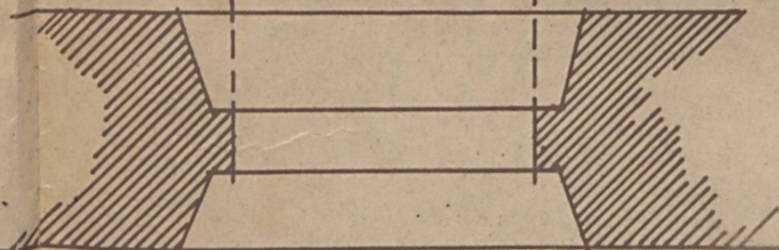
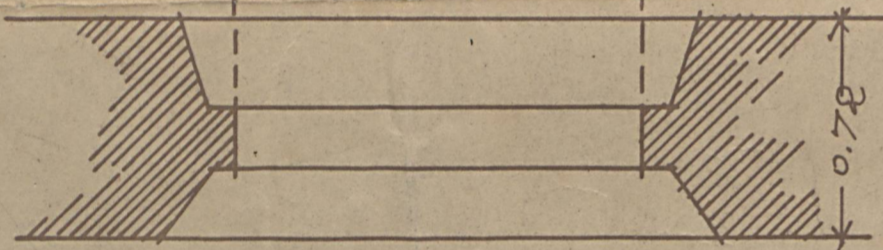


Okna transeptu
szt. 2.



Vitrage:
Wymiary w świetle
otworów w murach
sprawdzić z natury
przed wykonaniem
okien.

Okna presbiterium
(pożądane zastawienie witraży).
szt. 2.



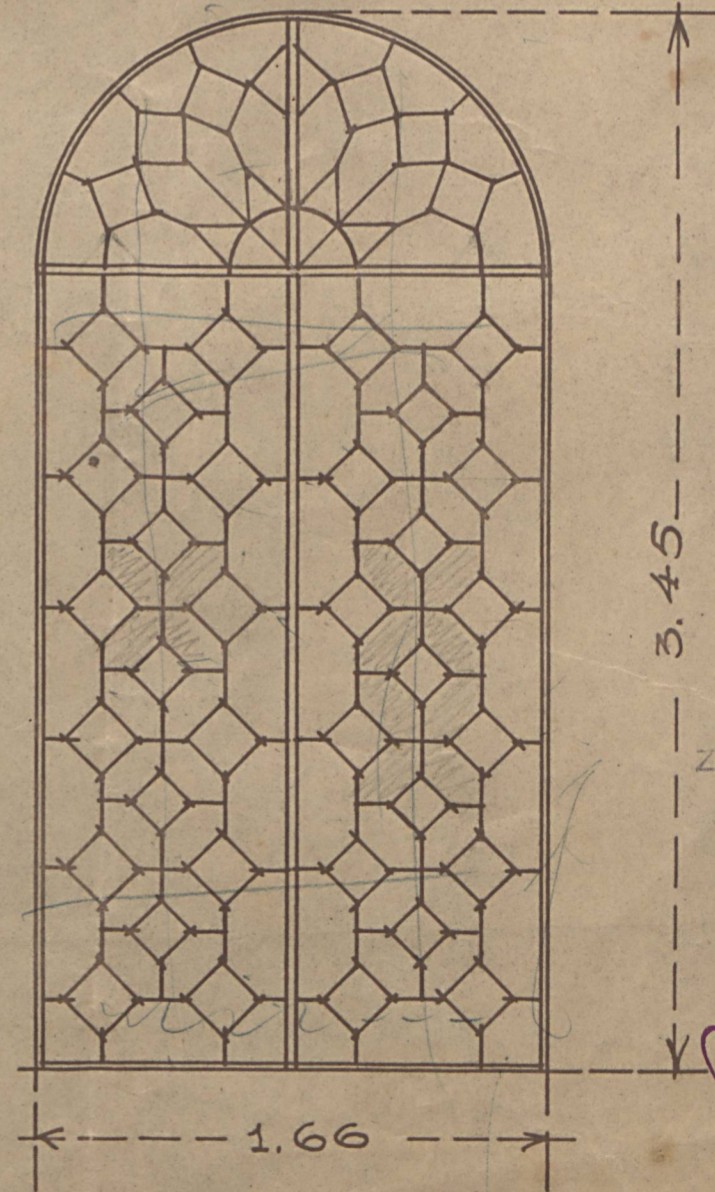
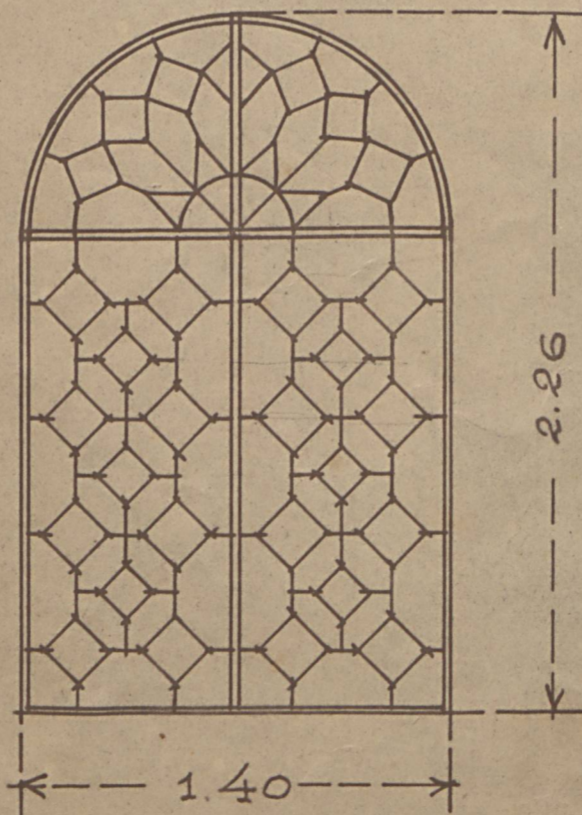
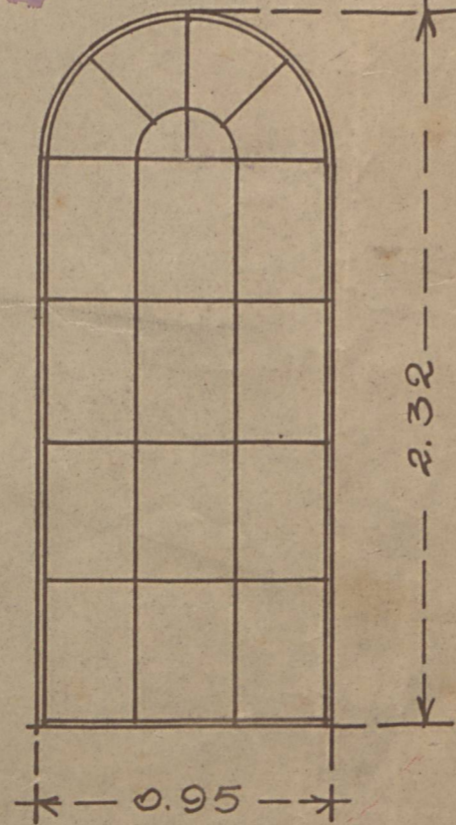
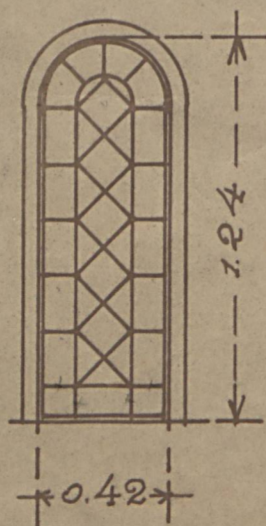
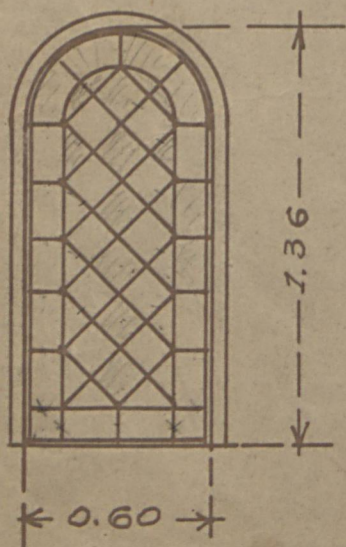
Okna transeptu
szt. 4.

Okno chóru
szt. 1.

Okna zakr. i kaplicy,
szt. 4.

Okna śieni
w zakr. i kapl.
szt. 5.

Okna apsydy
zakr. i kaplicy
szt. 6.



ZASTRZEGA SIĘ ZWROT
RYSUNKU

J. Prokoc
arch.

Skala 1:25